



SPRING 2011

# ARCHIVES

The Newsletter of the AIA Northern Illinois Chapter

## In This Issue

- 1 Cover "Spring"
- 2 President's Message
- 3 Name that Building
- 4-6 2010-2011 AIA NI Student Design Competition Recap
- 7 Message from Past Design Comp Winner
- 8-11 Guest Articles
- 12 Book Review
- 13 Government Affairs
- 14 Calendar

ARCHITECTURE WEEK April 11 to 15



## AIA NI Architectural Scholarship Competition 2010-2011 See page 4

Architectural drawings and renderings for the AIA NI Architectural Scholarship Competition 2010-2011. The drawings include a fourth floor plan, fifth floor plan, and sixth floor plan, all at a scale of 1/16" = 1'-0". The renderings show an exterior perspective of the building, a main lobby with a staircase, a second floor atrium, a main gallery with a large white sculpture, and a residential loft with a dining table and chairs.

Labels for drawings: **FOURTH FLOOR SCALE: 1/16" = 1'-0"**, **FIFTH FLOOR SCALE: 1/16" = 1'-0"**, **SIXTH FLOOR SCALE: 1/16" = 1'-0"**, **EXTERIOR PERSPECTIVE**, **MAIN LOBBY**, **SECOND FLOOR ATRIUM**, **MAIN GALLERY**, **RESIDENTIAL LOFT**.

## President's Message

**John T. Saunders, AIA**  
2011 AIA-NI President



**John T. Saunders, AIA** AIA NI PRESIDENT

### AIA = Advocacy in Action

In early February I had the opportunity to participate in the AIA National sponsored Grassroots conference held in Washington, DC and, just last week, I traveled to Springfield to take part in the AIA Illinois sponsored Prairie Grassroots event; both were first time Grassroots experiences for me. Both events were well planned, well executed and well attended; the Illinois event set a record for attendance with over 100 architects from throughout the State participating! Both the AIA National and AIA Illinois offices did excellent jobs in making these events successful.

During these most recent years when work has been scarce and we have been witness to one in five of our colleagues leaving the profession, it is comforting to know that the AIA has made certain that our "voices are heard and our concerns expressed" at both the State and Federal government levels.

I would suggest that the next time we (myself included) bemoan the trite and common – "what has the AIA done for me lately?" – that we think about AIA also standing for "Advocacy in Action" – because that is a significant part of what our organization does to secure and improve our chosen profession.

When these events "roll around" next year, please consider attending one or both – you won't be disappointed!

---

Students were not required to build a model for the competition, but some did.



#### Larson & Darby Group

4949 Harrison Ave.  
Suite 100  
Rockford, IL 61108  
815.484.0739  
[www.larsondarby.com](http://www.larsondarby.com)

#### YCS Printing

305 E. Riverside Blvd.  
Loves Park, IL 61111  
  
815.636.2058  
[ycsprinting.com](http://ycsprinting.com)



McClellanBlakemore  
Architects  
[www.m-b-arch.com](http://www.m-b-arch.com)

## Name That Building

### Name That Building Contest!

**P**ictured to the right is an image of a building standing overseas. Chapter members are encouraged to correctly identify the mystery building.

Hint: a very special event will be held in this sacred place within the next month.

The winning entries will be recognized in our next newsletter. The building will be identified and profiled in a brief article.

#### Please submit answers to:

Jennifer Deuth Fritts, AIA  
jdeuthfritts@larsondarby.com



### Fall 2010 Building Description

**T**he Aldo Leopold Center is located in Baraboo, Wisconsin designed by The Kubala Washatko Architects.

The Leopold Center has received Platinum LEED® Certification from the U.S. Green Building Council. Following a rigorous assessment, the Leadership in Energy and Environmental Design (LEED) program.

The Leopold Center helps us to envision how we can use energy more efficiently and develop positive relationships to other people and the planet. Through energy efficiency, renewable energy, and an ongoing commitment to land stewardship, the Leopold Center became the first carbon neutral building certified by LEED—meaning annual operations account for no net gain in carbon dioxide emissions. The Leopold Center is a net zero energy building, meeting all of its energy needs on site.

The footprint of all impervious areas (building and parking areas) have been kept to an absolute minimum, allowing rain to be absorbed by the vegetation restored on the site. An aqueduct carries the storm water from the roof of the main building to a rain garden, a demonstration of reintegrating rain that does fall on impervious areas slowly back into the ground. A small water feature built into the aqueduct will allow the courtyards to be filled with the subtle and soothing sound of moving water.

See <http://www.aldoleopold.org/legacycenter/design.html>



### AIA-NI Affiliate Members

**WILLIAMS-MANNY**  
INSURANCE EXCLUSIVELY SINCE 1896

**Williams-Manny**

555 S. Perryville Rd.  
Rockford, IL 61125

815.398-6800  
williamsmanny.com



**Rockford  
Structures  
Construction Co.**

10540 N. 2nd Street  
Rockford, IL 61115

815.633.6161  
rockfordstructures.com



**Pierce Laminated  
Products**

2430 N. Court Street  
Rockford, IL 61103

815.968.9651  
piercelaminated.com

**AIA-NI**  
**Affiliate Members**



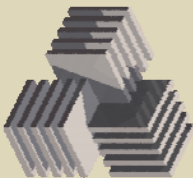
**NIBCA**

Northern Illinois  
Building Contractors  
Association

1111 S. Alpine Rd.  
Rockford, IL 61108



Illinois State Capitol  
AIA Prairie Grassroots



**Gary W. Anderson &**  
**Associates**

333 E. State Street  
Rockford, IL 61104

[www.gwaarchitect.com](http://www.gwaarchitect.com)

## AIA Architectural Scholarship Competition 2010-2011

“Art Center + Lofts”

This year marked the 35<sup>th</sup> annual Student Architectural Scholarship Competition for AIA NIC. Six schools participated with 78 projects. Several mentors from local firms communicated with and visited the prospective students' classes to offer guidance and answer questions.

At the Awards Banquet on Wednesday, March 9, 2011 in the upstairs banquet room at Benson Stone, over 60 people gathered to find out whose projects stood out above the rest. There is a lot of talent in the surrounding schools of Northern Illinois. This applies to the students and their teachers. For some students, this would be their first attempt at completing a project with such a defined program. For others, past experience was evident. We hope that all who were involved learned about what architectural design can be.

A short while ago, the AIA NIC board received a very nice letter from a former student who had won this competition – please see the letter on the page 7. Matthew Berge won the top prize back in 1999. Matt went on to architecture school and recently became a licensed architect. He works in the office of Brost Architects & Planners in Cedar Rapids. We invited him to speak at the Awards Banquet and he agreed to.

Matt gave a great talk to the audience of students, parents, teachers and the people who were involved in the process of this competition. His presentation included how to become an architect, what an architect does and what other types of work a person with an architecture degree might spin off into.

Here are the highlights:

### How Do I Become an Architect?

- Education
- Intern Development Program (IDP)
- Architect Registration Exam (ARE)

### What Does an Architect Do?

- “Psychologist”
  - Guide clients through the building design process
- Civil Rights Activist
  - Buildings must comply with ADA
- Manager of a Professional Team
  - Coordinate architects, engineers, MEP, interior designers...
- “Lawyer”
  - Mediate when contract issues arise
- Environmental Activist
  - Consider that buildings consume a lot energy
- Superhero
  - Protect health, safety and welfare of the general public

# AIA Architectural Scholarship Competition 2010-2011

continued

## What Else Can I Do?

- 3D modeling and rendering for video games & movie special effects
- Building Code Enforcement
- Construction Project Management
- Facilities Manager
- Real Estate Developer
- Furniture / House Ware Designer
- Be a parody singer like Weird Al, who has an architecture degree

Matt was insightful and enjoyable to listen to. We thank him for driving three hours from Iowa (and back) to deliver his speech and for graciously donating his would be stipend for speaking to the **Student Architectural Scholarship Fund**.

Jennifer Spencer from Gary W. Anderson & Associates organized the Competition for 2010-2011. She rallied the troops, gathered up the mentors and presented the awards. AIA NIC President John Saunders of Larson & Darby Group handed out the awards.

Jennifer is on the Board of Directors and serves as Associate Director. On behalf of AIA NIC, she thanked the sponsors, the mentors, the students and the teachers. The sponsors donated to the scholarship fund via the annual golf play day.

Jennifer described past programs and projects that the students have worked on. In recent years an animal shelter, a tree house, a library and a New Orleans residence have been in the competition. This school year's program was an art center and lofts to be located within an old commercial building in downtown Rockford – a renovation project. It was a tough program and tough to narrow down the best projects. The students met the challenge exceptionally well as there was great design work presented. The program requirements, design, presentation and creativity were factored into the judging of the projects.



## AIA-NI Affiliate Members



**Hi-Tech Plumbing**

5431 International Dr  
Rockford, IL 61109  
815.874.3933



Illinois State Capitol  
AIA Prairie Grassroots



**Bennett  
Construction, inc.**

202 W. 3rd. Street  
Pecatonica, IL 61083

815.969.9000

**AIA-NI**  
**Affiliate Members**



**Kitzmans**

1319 Kilburn Ave.  
Rockford, IL 61107

815.316.2145  
www.kitzmans.com



Illinois Old State Capitol  
AIA Prairie Grassroots



## AIA Architectural Scholarship Competition 2010-2011

continued

### Top Awards:

- 1<sup>st</sup> Place for \$1,000  
Sophomore, Genoa Kingston High School, Brooke Fowler
- 2<sup>nd</sup> Place for \$800  
Senior, Belvidere High School, David Vant
- 3<sup>rd</sup> Place for \$500  
Senior, Belvidere North High School, Alex Doyle

### Honorable Mentions included a certificate and check for \$100 each:

- Senior, Belvidere High School, Brian McWilliams
- Junior, Freeport High School, Darren Nesemeier
- Sophomore, Belvidere North High School, Selena Sanchez
- Senior, Freeport High School, Israel Eastlick
- Senior, Belvidere High School, Federico Felix

The Traveling Plaque was awarded to Genoa-Kingston High School.

### Thank You to the Teachers:

- Belvidere North High School - Ricky Booth
- Belvidere High School - Mike Saville
- Forreston High School - Trent Sellers
- Boylan High School - Bud May
- Genoa Kingston High School - Phil Jerbi
- Freeport High School - Heather Cornelius





## Guest Article

### AIA-NI Affiliate Members



#### Rock Valley Brick & Supply Company

5901 Material Ave  
Loves Park, IL 61111

815.877.5788  
rockvalleybrick.com



#### Sjostrom & Sons Con- struction

1129 Harrison Ave.  
Rockford, IL 61104

815.226.0330  
sjostromconstruction.com



The Q Helps Provide the Best Millwork in Years at Byron Public Library

By Kara Thorp, AWI QCC Communications Specialist

The Byron Public Library in Byron, IL, is yet another example of how the Q helped provide top-notch millwork and adherence to specifications. The project included premium-grade Red Oak window casing, baseboard, column surrounds, wall rails, and borrowed lites. Also featured was an angled, stain grade circulation desk, along with a book return, children's desk, and cubbies. Plastic laminate work included cabinets, countertops and lockers. Overall, the project garnered sincere satisfaction from the architect.

"This is the best casework and finished carpentry I've seen in years," said Anthony Chinn, project manager at PSA-Dewberry/BCA in Elgin, IL. "I'm very happy with the results of this project, and will specify the Q for all projects involving architectural woodwork from now on." Chinn is an industry veteran, with more than 20 years of experience in the industry.

The lone deficiency identified during inspection by the Q-representative was the use of single-pin shelf supports in the plastic laminate casework. Dual-pin supports (often found with a shelf retention feature) are required for premium grade by the AWI Quality Standards Illustrated (QSI) under which the 2009 project was assessed. Under the newly adopted Architectural Woodwork Standards (AWS), Edition 1, designers and woodworkers utilizing in-line boring have their choice of a single metal pin, or a double pin support (which may be plastic). Either is compliant for all quality grades, provided it meets ANSI/BHMA Grade 1 requirements. (See also AWS Section 10, 4.4.14.10.17 for other standards related to adjustable shelf support.)

"The library was the first QCP project for the woodworker. It's routine that at least one minor deficiency is identified during inspection," said Wayne Hintz, AWI QCC Inspections Manager. "Once the woodworking firm received the inspection report, they very quickly corrected the issue and submitted photos to verify the fix," Hintz added.

**Continued**

A potential deviation from project specifications was also identified during inspection. The woodworker used melamine for the interior of the Oak cabinets, which under the QSI is non-compliant for premium grade (400A-T-1). However, the woodworker produced documentation showing that the architect was apprised of the deviation associated with the material. The use of melamine was ultimately approved by the designer because of advantages it offered the Byron project.

“Overall, this was a good educational experience for a very competent woodworking firm, and the architect was exceptionally pleased as well,” said Hintz.

Kara Thorp  
 Communications Consultant  
 AWI Quality Certification Program  
 46179 Westlake Drive  
 Potomac Falls, VA 20165  
 o - 703-620-1604  
 c - 571-230-4565  
 kthorp@awiqcp.org  
 www.awiqcp.org

**AIA-NI****Affiliate Members**

**Larson  
 Engineering**

1488 Bond St.,  
 Suite 100  
 Naperville, IL

630.357.0540

**Legacy Designs**

**6116 Mulford Village**  
 Rockford, IL 61107

815.484.4708  
 legacydesigns.net

## Guest Article

**AIA-NI**  
**Affiliate Members**

**Terracon**

Consulting Engineers & Scientists

**Terracon**

800.593.777

www.terracon.com

**The Buckley**  
**Companies**

363 Financial Court  
Rockford, IL 61107

815.229.5789  
buckleycompanies.com

### NFRC's Component Modeling Approach Helps Architects Make Informed Decisions on Commercial Fenestration

By John Lewis

Illinois, like dozens of other states, has building energy codes that reference National Fenestration Rating Council (NFRC) procedures. That's because NFRC is a trusted and independent source of ratings that can be used to compare the energy performance of fenestration and fenestration attachment products.

NFRC's energy ratings provide the information that architects need to select the right windows for a project. For green building projects, selecting efficient windows can help save energy and provide daylighting benefits. These attributes are becoming more important as green building requirements become more common. There can even be financial incentives for building green. Under its Public Sector Electric Efficiency Program, the Illinois Department of Commerce and Economic Opportunity provides financial incentives for certain new public buildings that go beyond the Illinois Energy Conservation Code for Commercial Buildings.

Last year, NFRC developed a specialized rating and certification procedure that can help architects choose energy-efficient windows for non-residential projects. The program, called the Component Modeling Approach (CMA), generates whole-product energy performance ratings using data from the primary components of fenestration (frames, spacers, and glazing).

The CMA Software Tool (CMAST) uses energy-related performance information on NFRC-rated components, stored in online databases, to generate the ratings. It offers several benefits to the design community. For example, architects and others can use this online, user-friendly tool to:

- Model different fenestration designs to compare energy performance and make informed choices.
- Help design energy-efficient windows, curtain wall systems, and skylights for high performance building projects.
- Determine whether a product meets a project's specifications.

The program uses well established NFRC procedures (NFRC 100 and NFRC 200) to generate the ratings. Both NFRC 100 and 200 are referenced by ASHRAE 90.1-2007 and IECC 2009, which are the bases of Illinois' Energy Conservation Code.

In September 2010, NFRC announced the results of a study on CMA's effectiveness. The study, conducted by Heschong Mahone Group, compared CMA to default fenestration rating values in California buildings. The study found the use of CMA provided a maximum increase of 11.7 percent in energy compliance margins.

One conclusion that can be drawn from these results is that the use of CMA can lead to more accurate HVAC loads modeling and sizing. Because CMA provides the most accurate values of window energy and visible performance, builders and architects can better determine right-sized HVAC systems to help maximize a building's energy efficiency.

Continued



“These results in California are extremely encouraging,” says Jim Benney, NFRC’s CEO. “We fully expect similar advantages with other above-code incentive programs that allow the use of default calculation methods or the use of more-accurate NFRC ratings calculated with the CMA methodology.”

The benefits of CMA can also improve energy use on a national level. According to the U.S. Energy Information Administration, residential and commercial buildings account for 41 percent of energy use in the United States. CMA may help reduce this figure by enabling architects and building professionals to install the most energy-efficient windows and right-sized HVAC systems.

To learn more about CMA or NFRC, please visit [www.nfrc.org](http://www.nfrc.org).

*John Lewis is NFRC’s Director, New Programs.  
You can reach him at [jlewis@nfrc.org](mailto:jlewis@nfrc.org) or (301) 589-1776.*

## AIA-NI Affiliate Members



**Benson Stone Co.**

1100 Eleventh Street  
Rockford, IL 61104

815.227.2000  
[bensonstone.com](http://bensonstone.com)

## **John R. Cook & Associates**

861 N. Madison Street  
Rockford, IL 61107

## Book Review

**AIA-NI**  
**Affiliate Members**


**GOMMEL DESIGN**  
interior design / wayfinding

**Jacqueline Gommel**  
ASID, IIDA, LEED AP

2926 Northcliffe Ct.  
Rockford, IL 61114  
tel. 815.877.9206  
fax 815.877.9207  
JJGommel@aol.com



Sooper Yooper: Environmental Defender, a book for young readers published by Thunder Bay Press, tells the story of an environmental superhero who defends the Great Lakes from foreign invaders of an aquatic nature. Designed for children ages 8 to 12, Sooper Yooper draws attention to ongoing issues involving the largest freshwater system in the world through the hand-painted, colorful illustrations of artist Mark Heckman and a contemporary story penned by Mark Newman.

With our waters becoming increasingly important in the 21st century, mankind will have to fight battles against the villainous issues of toxic and nutrient pollution, invasive species and habitat degradation. As the recent BP oil spill in the Gulf of Mexico points out, we must remain vigilant to every potential danger or we are likely to face dire consequences in the future.

The book and subsequent interactive tour are designed to educate and entertain kids about the importance of protecting our natural resources. The message is simple: when it comes to the environment, everyone can be a superhero!

Sooper Yooper: Environmental Defender is a great gift idea and is available for purchase for \$17.95 at [www.SooperYooper.com](http://www.SooperYooper.com).



**Stenstrom**  
**Companies Ltd.**

2420 20th Street  
Rockford, IL 61125

815.398.2420  
[www.stenstrom.com](http://www.stenstrom.com)

# Government Affairs

**AIA NI** is proud to announce that Jeffery E. Flemming, AIA  
 Rockford Associates, Inc.  
 was elected AIA Illinois President  
**C**ongratulations, Jeff!  
 from the AIA NI Board of Directors

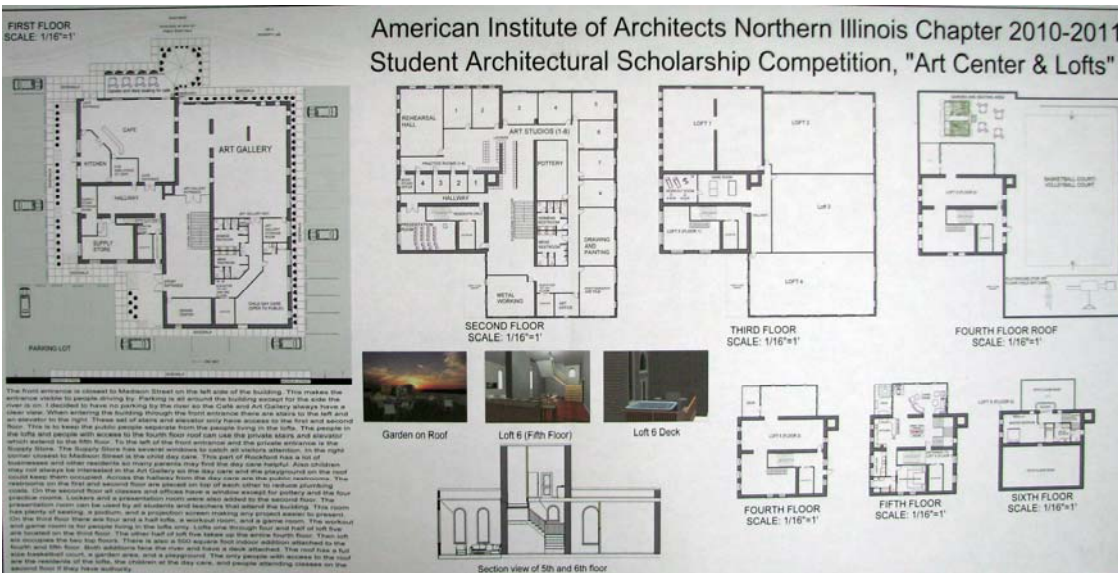
**AIA-NI**  
**Affiliate Members**

**SCANDROLI**  
**CONSTRUCTION**

*Scandrolti*  
*Construction*

823 N Madison St.  
 Rockford, IL 61107  
 815.962.4037

**M**ayor Morrissey will proclaim the week of April 11, 2011 "Architecture Week".  
 In honor of Architecture Week, several local firms will display their work at the  
 Chicago Rockford International Airport and Rockford City Hall.  
**C**elebrate and share our design profession with others!




**engineering & LEED consultants**  
 321 w. state st. / suite 803  
 rockford, il. 61101  
 815.489.0900 p  
 815.489.0902 f  
[www.mepdesigngroup.com](http://www.mepdesigngroup.com)

**Mid-States**  
**Concrete**  
**Industries**

500 South Park Ave.  
 South Beloit, IL 61080  
 800.236.1072



*AIA Northern Illinois*  
*A Chapter of the American Institute of Architects*

**AIA/Northern Illinois 2010 Awards**  
**CORRECTION** (Fall 2010 Newsletter)  
 The awards were created by **Ken Swart**.





SPRING 2011

# ARCHIVES

The Newsletter of the AIA Northern Illinois Chapter

## Calendar

- **April 10th, Sunday**  
**Jeanne Gang: Success by Design**  
**2:00 pm @ Belvidere High School**
- **April 11th through the 15th**  
**2011 Architecture Week**
- **May 3rd, Tuesday**  
**Continuing Education LNL**  
**SourceCorp at Benson Stone**
- **May 12th through the 14th**  
**AIA National Convention**  
**New Orleans, LA**
- **Additional Events to be Determined**

**Watch for E-mail Blasts for upcoming lunch presentations, events and lectures.**

The "calendar" is subject to change. For information regarding any of the events listed, please contact [jdeuthfritts@larsondarby.com](mailto:jdeuthfritts@larsondarby.com).



The **AIA NI Golf Play Day** raises funds for the Student Architectural Scholarship Competition.

If you are interested in being on the committee to help run and/or organize the play day, please contact Andrew Macklin: [Andrew@Rockfordassociatesinc.com](mailto:Andrew@Rockfordassociatesinc.com)

## Information

**T**his Newsletter is a publication of the Northern Illinois Chapter of the American Institute of Architects. The opinions expressed in this newsletter are those of the authors and do not represent the policies of the American Institute of Architects nor this Chapter. The authors are solely responsible for the information contained in their articles.

Membership in the AIA indicates to the public these architects have a commitment to excellence, service, and professionalism. When hiring an architect, be sure he or she has made these commitments to their profession, through membership in the AIA.

*AIA Northern Illinois consists of members from Boone, Carroll, DeKalb, Jo Davies, Lee, Ogle, Stephenson, and Winnebago counties in Northern Illinois.*



**W**e are continually looking for suggestions, ideas, information, and articles for the newsletter. If you or a colleague are having problems receiving information from the chapter (newsletter, program notices, etc..) please let us know. We want everyone connected and receiving chapter information.

Please contact: Jennifer Deuth Fritts (815) 484-0739 [jdeuthfritts@larsondarby.com](mailto:jdeuthfritts@larsondarby.com)

## 2011 Board of Directors

### President

John T. Saunders, AIA  
Larson & Darby Group

### Past President

Gary W. Anderson, AIA  
Gary W. Anderson & Associates

### Vice President

open

### Treasurer

Frank St. Angel, AIA

### Secretary

Erin O'Keefe, Assoc. AIA  
Rockford Associates, Inc.

### AIA Illinois Delegate

Richard S. McClelland, AIA  
Larson & Darby Group

### AIA Illinois Delegate—Alternate

Gary W. Anderson, AIA  
Gary W. Anderson & Associates

### External Director

Andrew Macklin, Assoc. AIA  
Rockford Associates, Inc.

### Internal Director

Jennifer Deuth Fritts, AIA  
Larson & Darby Group

### Special Events Director

Open

### Associate Director

Jennifer Spencer, Assoc. AIA  
Gary Anderson & Assoc.

### Visiting Affiliate

Joe Scandrol, Jr.  
Scandrol Construction

